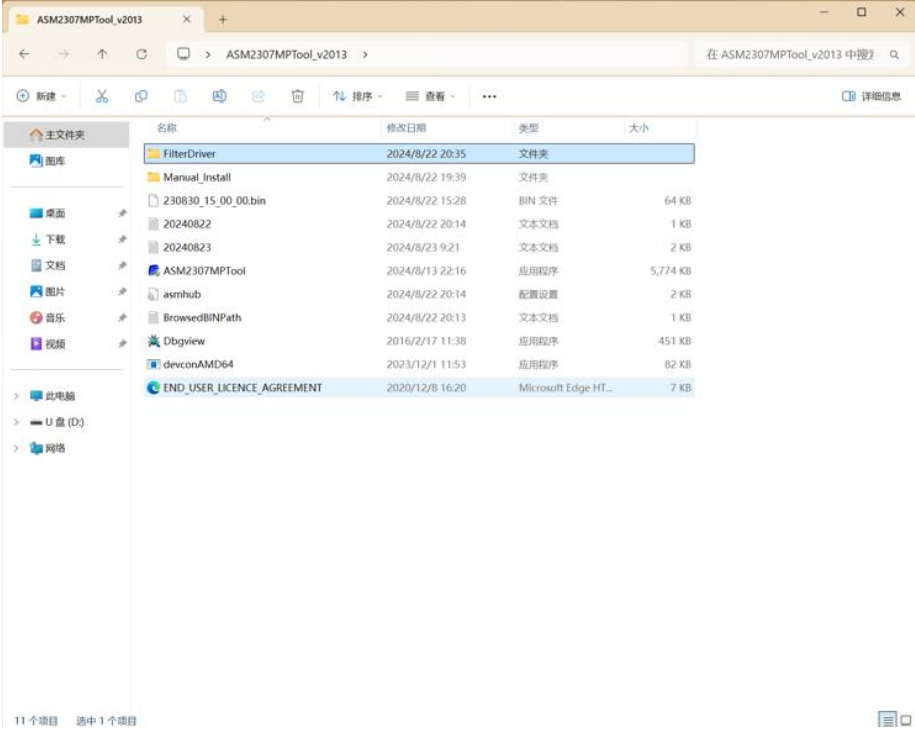


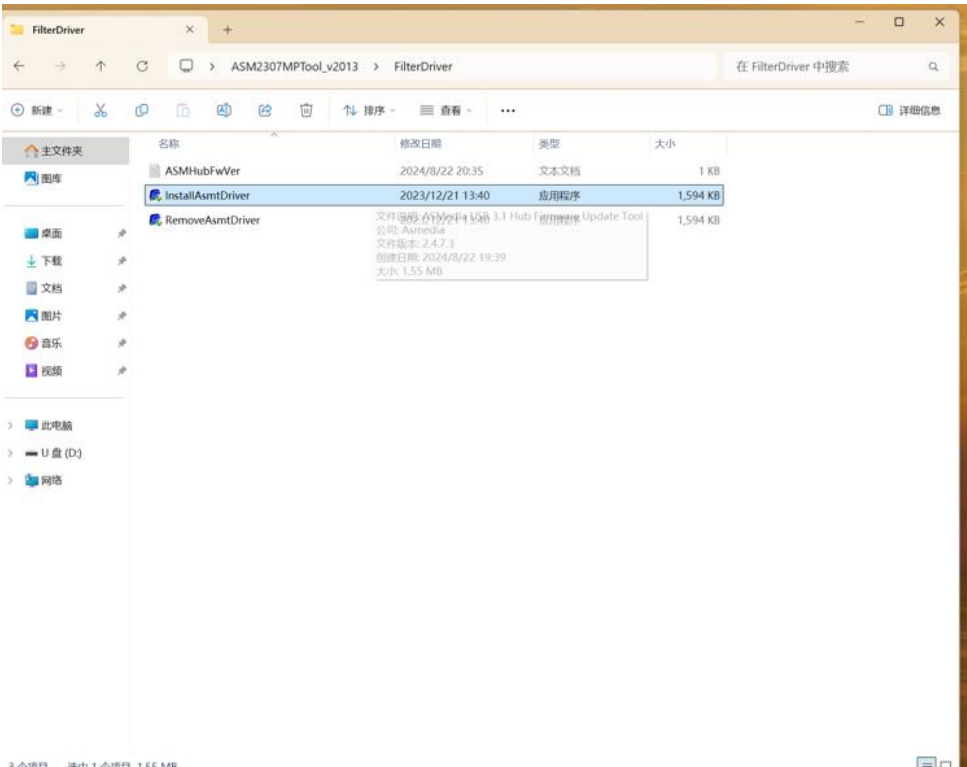
GTI12 和 GTI14 更新 HUB 固件操作指南

解决问题：关机和休眠功耗问题，更新后，系统打开快速启动对功耗不会产生影响

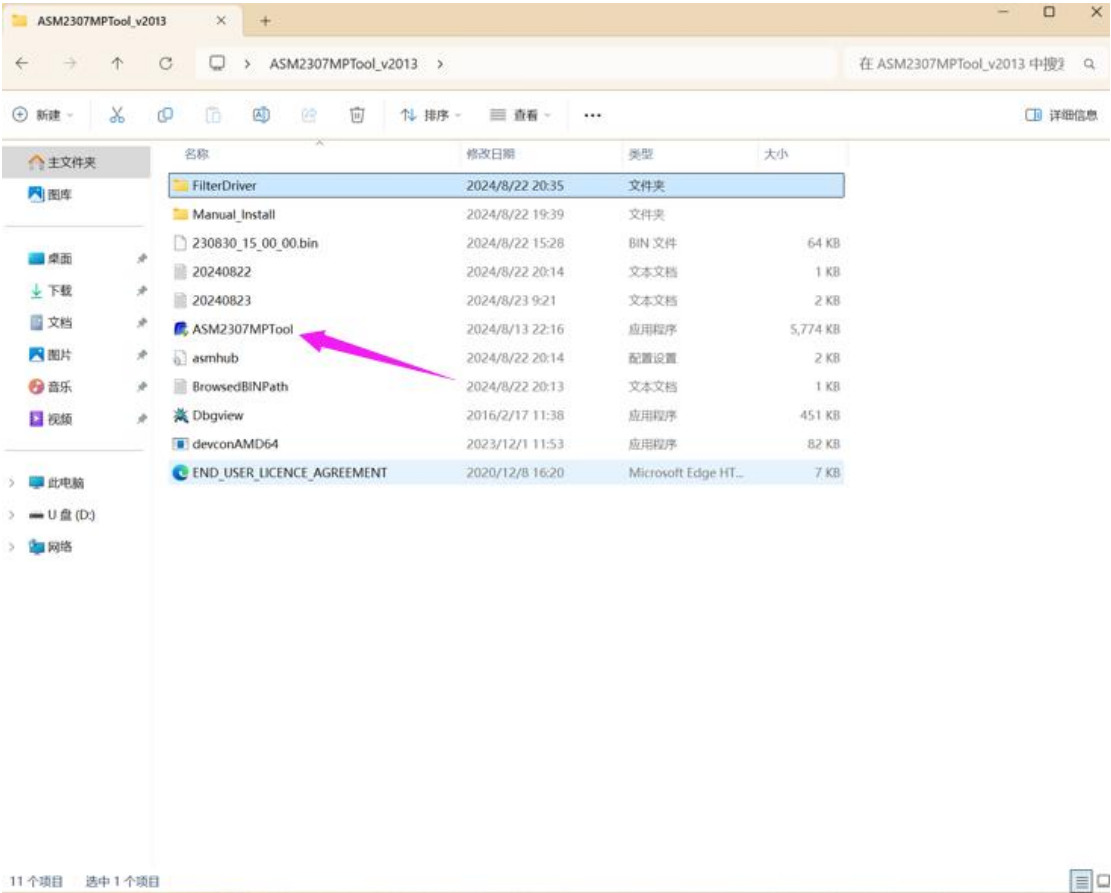
1. 打开 ASM2307MPTOOL_v2013 文件夹



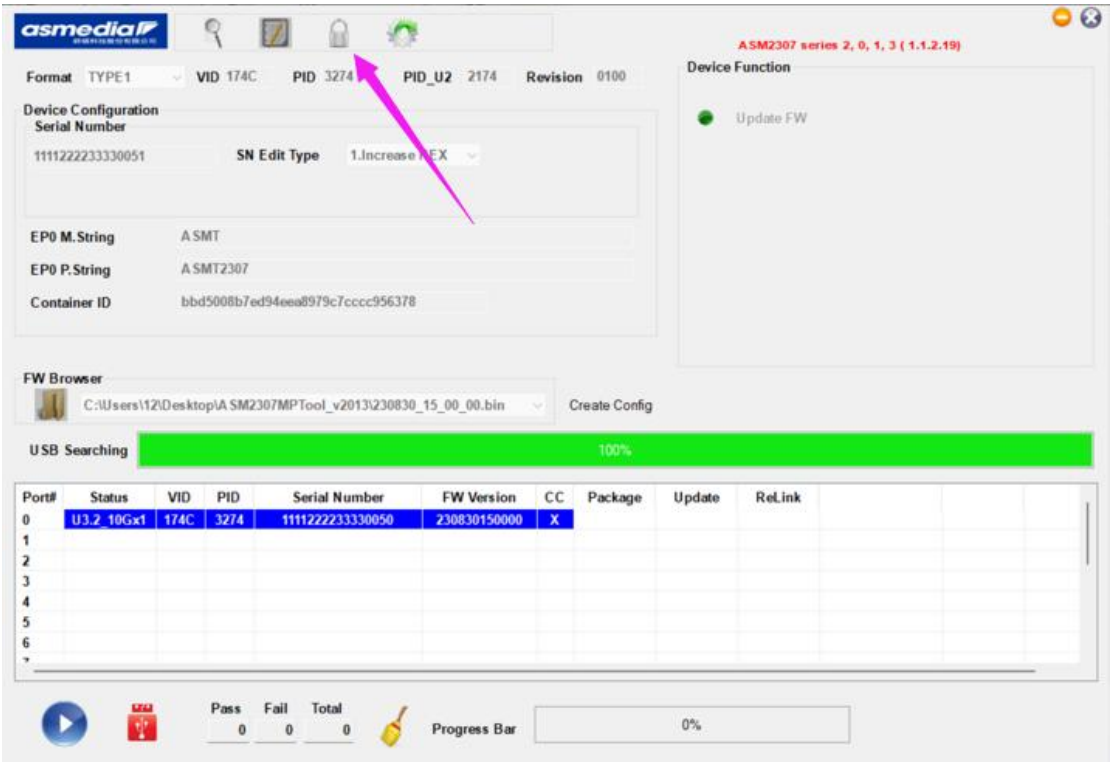
2. 打开 installasmdriver 安装工具驱动



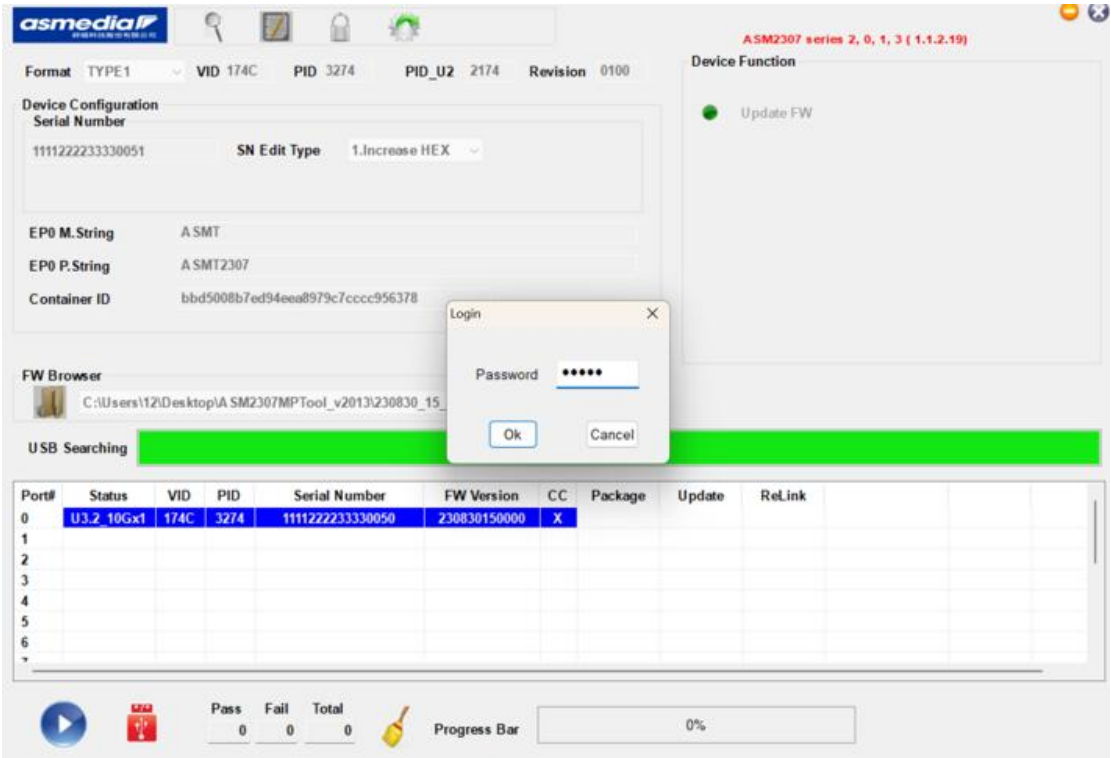
3. 打开 ASM2307MPTOOL 具软件



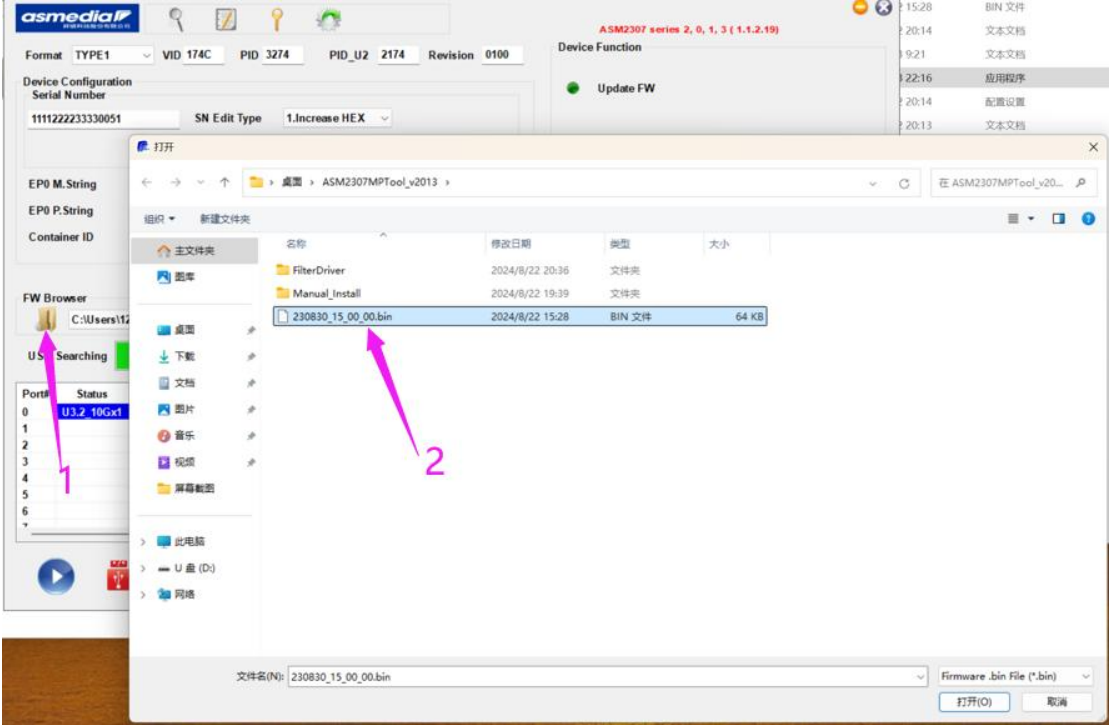
4. 点击箭头解锁位置








5. 输入密码 asmedia



6. 选择固件



7. 点击箭头 1 后，开始更新固件，完成后如箭头 2 处显示 PASS 即可，关闭软件，再把机器关机，并移除 AC 电源线，再插入 AC 电源线即可。



Format TYPE1 VID 174C PID 3274 PID_U2 2174 Revision 0100

Device Configuration

Serial Number
1111222233330052 SN Edit Type 1.Increase HEX

EP0 M.String A SMT

EP0 P.String A SMT2307

Container ID bbd5008b7ed94eea8979c7cccc956378

Device Function



● Update FW

FW Browser

C:\Users\12\Desktop\A SM2307MPTool_v2013\230830_15_00_00.bin Create Config

USB Searching 100%

Port#	Status	VID	PID	Serial Number	FW Version	CC	Package	Update	ReLink
0	U3.2 10Gx1	174C	3274	1111222233330050	230830150000	X		PASS	
1									
2									
3									
4									
5									
6									
7									



Pass Fail Total

1 0 1

Progress Bar

100%

PASS